



Friday, March 11, 2011

Offline America

why we (still) have a digital divide

Jessamyn West
Fiona Morgan
Justin Grimes

<librarian.net/talks/sxsw2011>

the story thus far



the story thus far



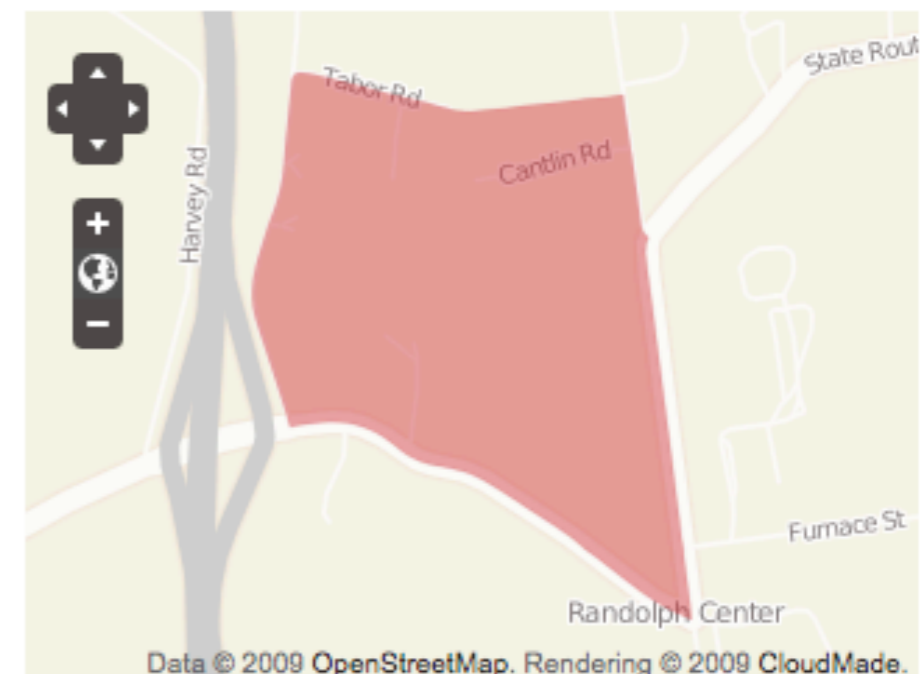
broadbandmap.gov

[FIND](#)

Search Results: Broadband Providers for this Area

The list below contains broadband providers that have reported offering service to all or part of the area that is shaded on the map to the right. Providers are listed in order of maximum speed advertised by the provider. To see more information about each provider, click on an individual service provider's name or click the Expand All button. Help improve this data by confirming the availability and speed information. This dataset is updated approximately every six months and your input is important to us.

[Print this page](#) • [About area](#) • [Compare Areas](#)



[Show All](#) • [Show Wired](#) • [Show Wireless](#)

[Expand All](#)

Advertised Speeds Above 3 Mbps

Data as of: 6/30/10

Sovernet Communications	25 - 50 Mbps	»
FairPoint Communications, Inc.	6 - 10 Mbps	
Verizon Communications Inc.	3 - 6 Mbps	
Comcast Corporation	3 - 6 Mbps	

Share »

[Share this page with my community](#)

Advertised Speeds Above 768 Kbps and Below 3 Mbps

Data as of: 6/30/10

Most Common Speed: 10 Mbps

[Data Source](#) • [Download](#) • [API Call](#)

Map »

[Map my community](#)

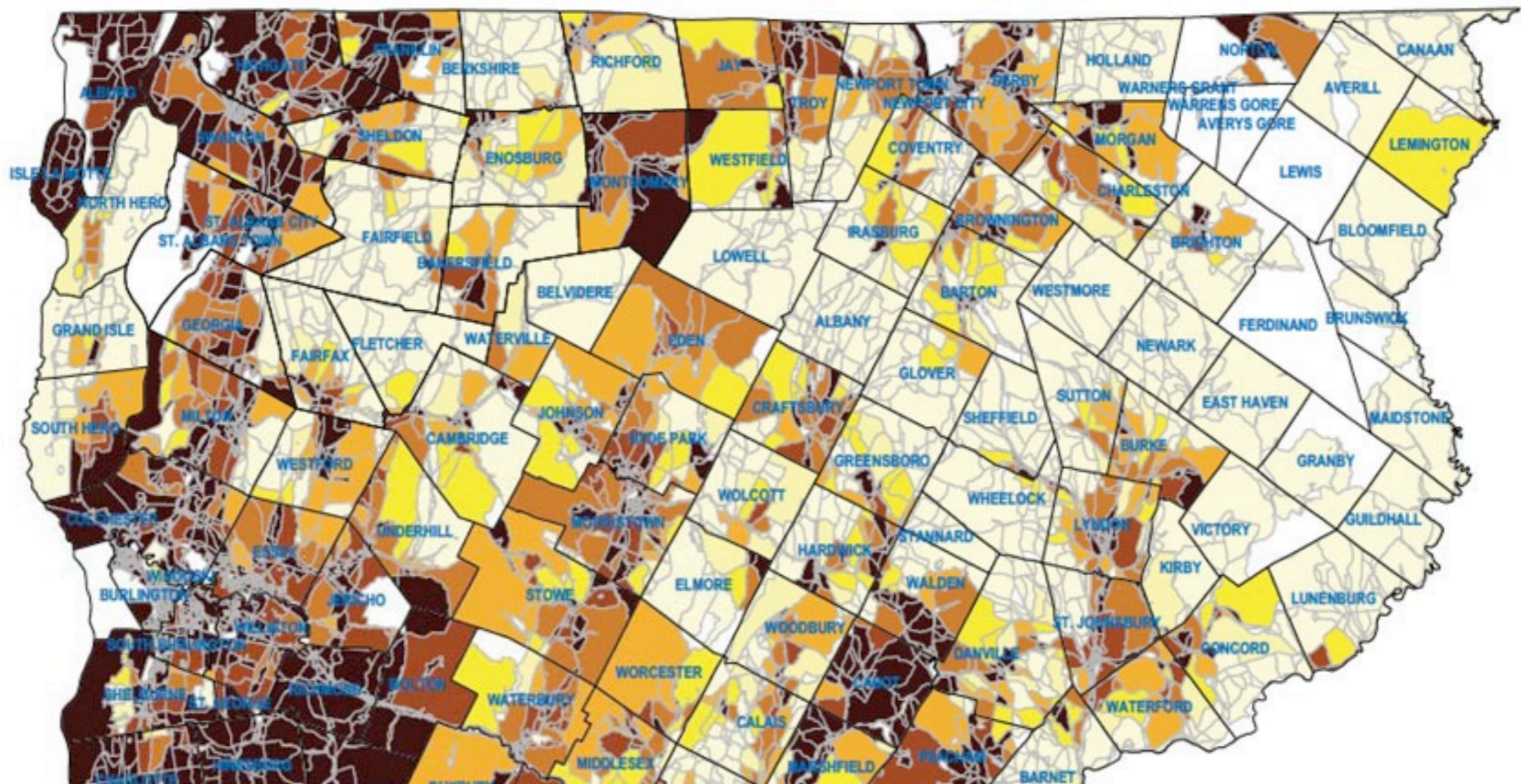
Rank »

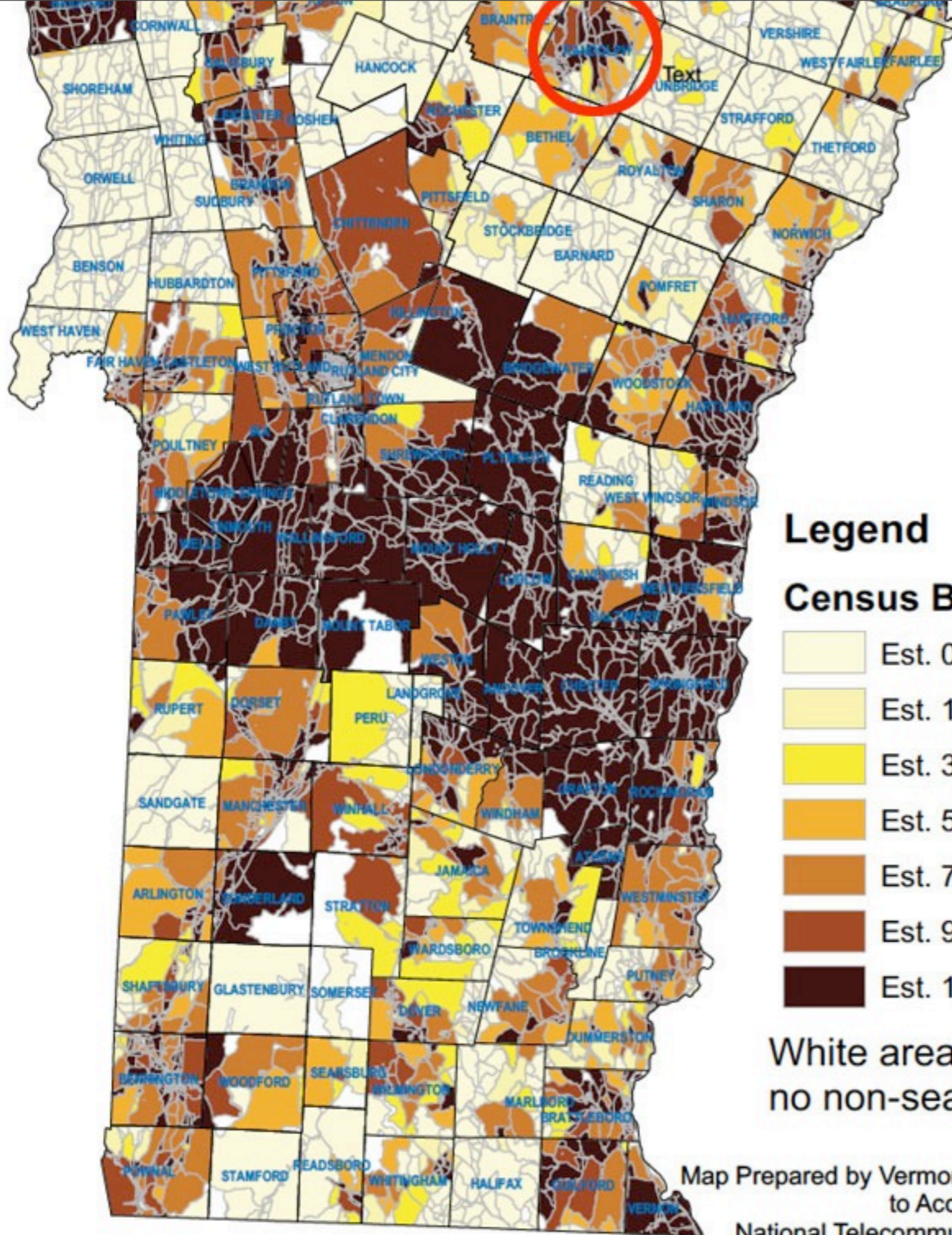
[Rank my community](#)

Satellite is also available in most areas. [Click here to read more](#)

recovery.vermont.gov

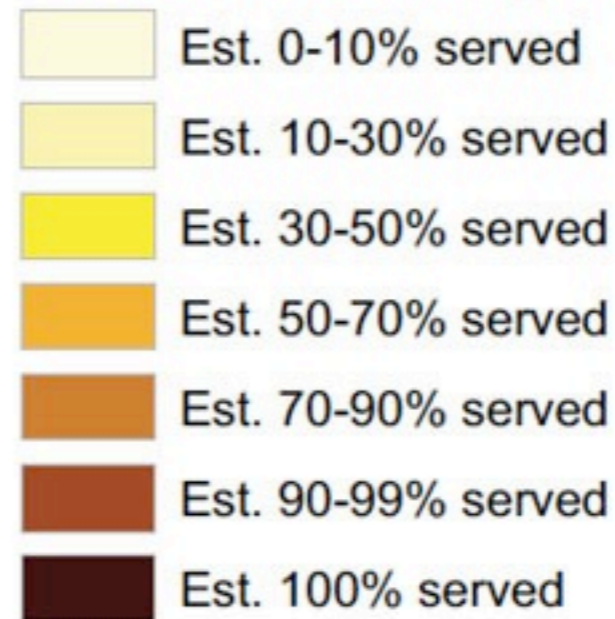
Broadband Availability by Census Block Reflecting Stimulus Program Definitions





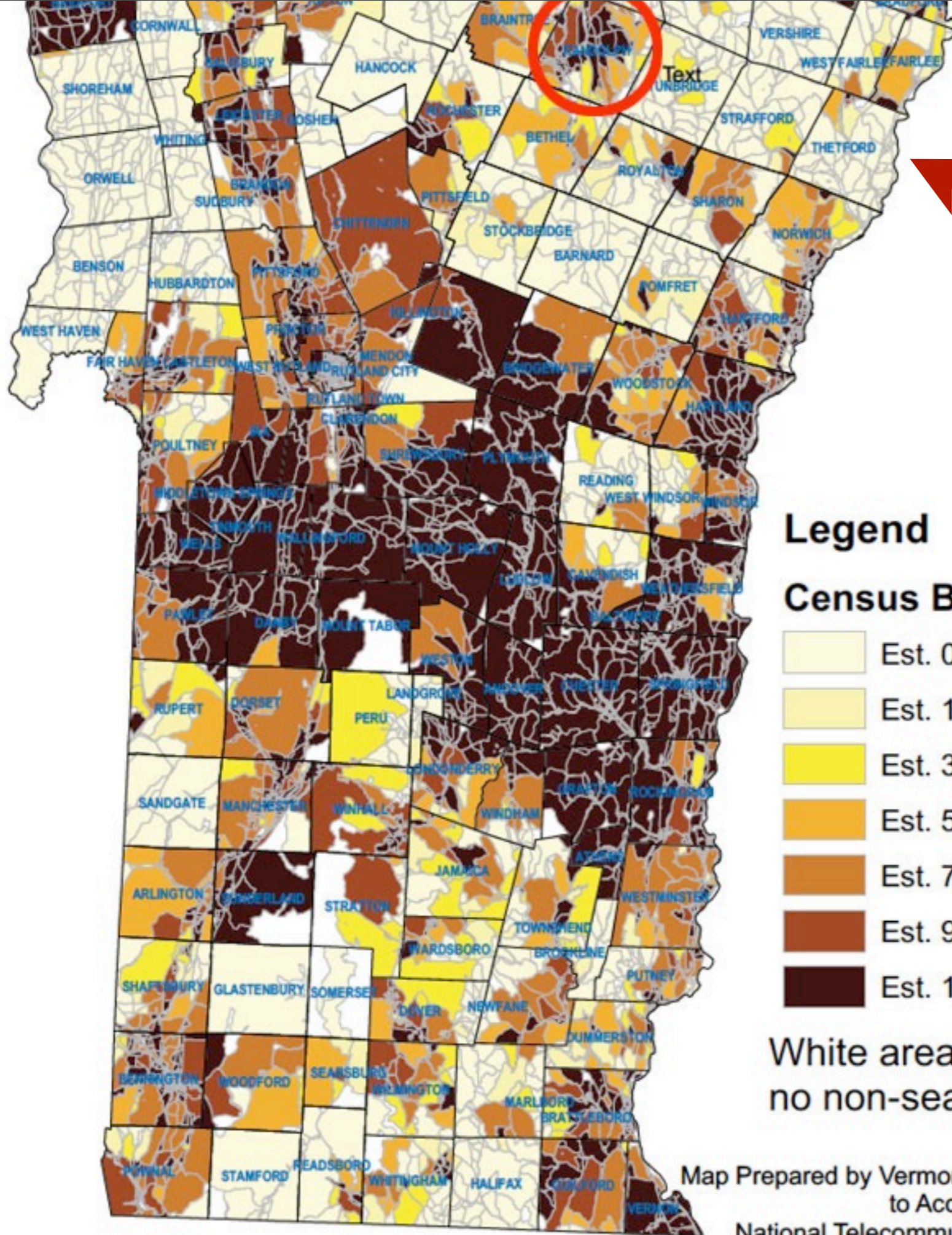
Legend

Census Blocks by Res. Broadband %



White areas reflect census blocks with no non-seasonal, residential addresses.

Map Prepared by Vermont Office of Economic Stimulus and Recovery to Accompany State Priorities to National Telecommunications and Information Administration



my house

Legend

Census Blocks by Res. Broadband %

- Est. 0-10% served
- Est. 10-30% served
- Est. 30-50% served
- Est. 50-70% served
- Est. 70-90% served
- Est. 90-99% served
- Est. 100% served

White areas reflect census blocks with no non-seasonal, residential addresses.

Map Prepared by Vermont Office of Economic Stimulus and Recovery to Accompany State Priorities to National Telecommunications and Information Administration

hearts & minds

Competing Media Messages:

The Top Two Themes about Technology

Percent of Technology Stories

Technology
makes life more
productive

23%

The internet is
not secure

18%

Date Range: June 1, 2009 – June 30, 2010

PEW RESEARCH CENTER'S PROJECT FOR EXCELLENCE IN JOURNALISM

takeaway points

- Evaluate info, even from reliable sources. Know who said what and WHY.
- Mobile web design can be low-bandwidth design
- Progressive disclosure in obvious places
- Know that offline folks are not all old, stupid or crazy
- Use your tech smarts to explain and outline the problem for people who don't understand this [librarians, educators, journalists, govt. folks]
- Small steps for last miles.

Thank you.